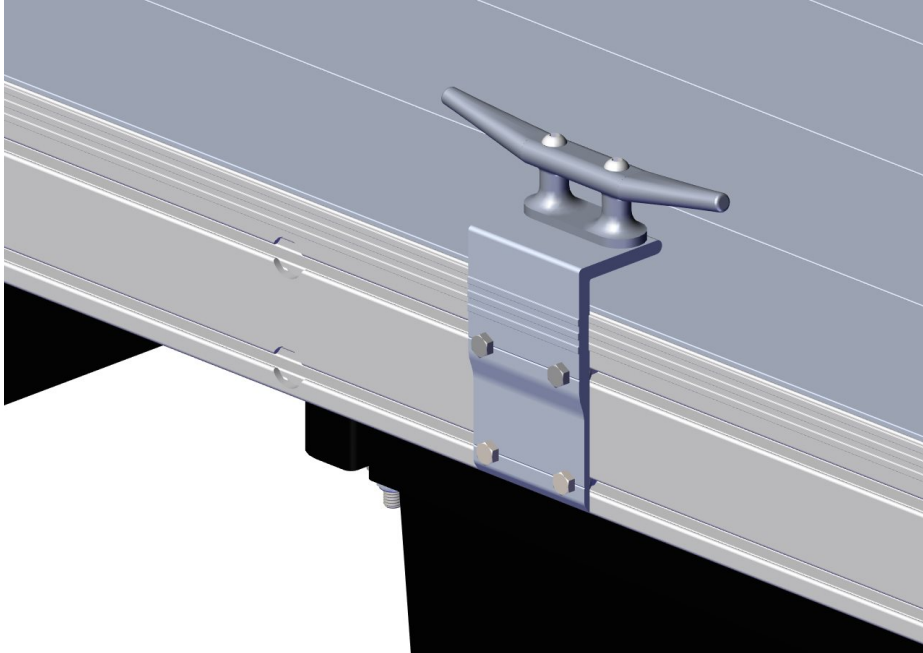
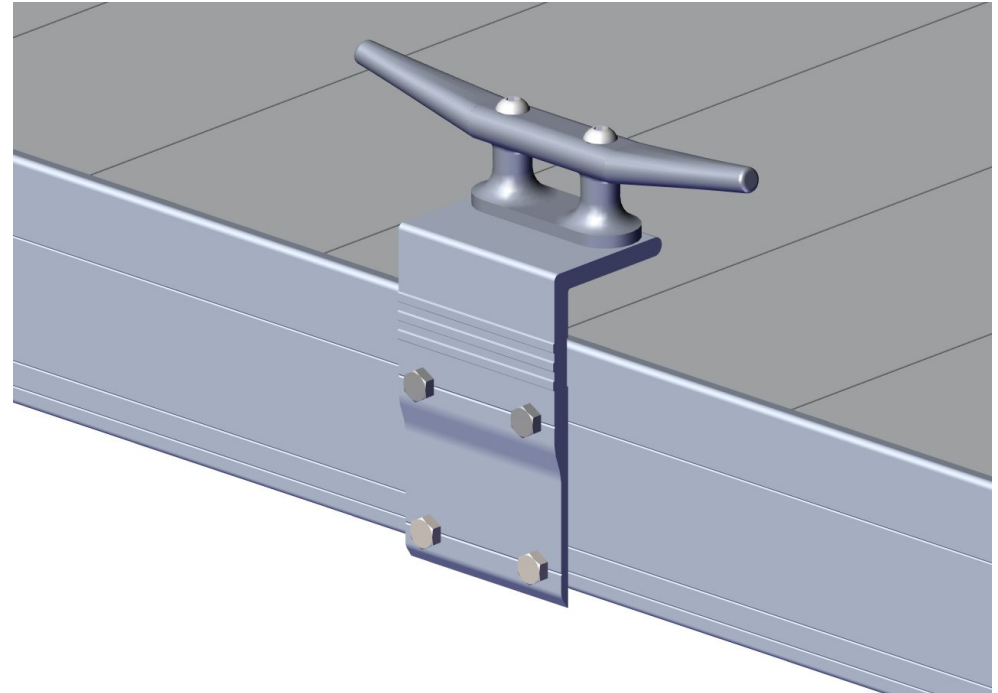


**FLOE FLOATING/SECTIONAL DOCK CLEAT ASSEMBLY**  
**ASSEMBLY INSTRUCTIONS**  
**P/N 510-05360-00**



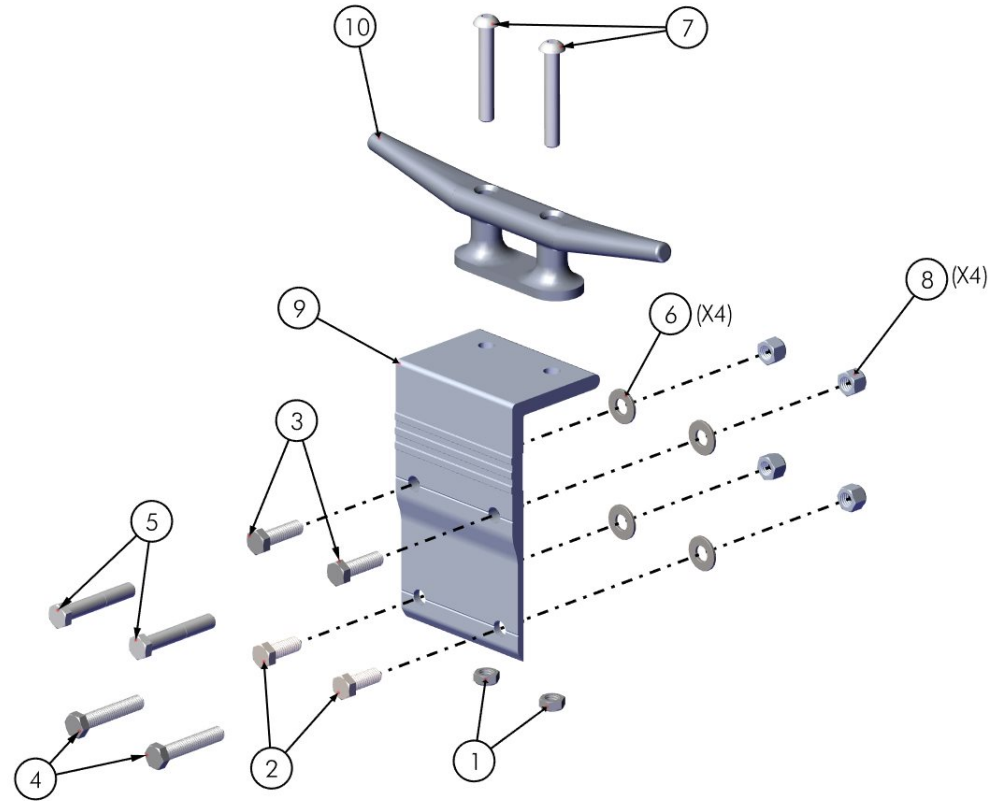
TOOLS REQUIRED (FLOATING)  
9/16" SOCKET OR WRENCH  
TORQUE WRENCH



TOOLS REQUIRED (SECTIONAL)  
-9/16" SOCKET OR WRENCH  
-FRAMING SQUARE  
-MARKER  
-DRILL W/ 13/32" BIT  
-TORQUE WRENCH

# CLEAT ASSEMBLY EXPLODED VIEW

P/N 510-05360-00



NO.	PART NO.	QTY	DESCRIPTION
1	001-37026-00	2	NUT, 3/8-16 JAM NYLOCK - ZINC
2	001-70105-00	2	HHCS, 3/8-16 X 1" 18-8 SS (FLOATING DOCKS ONLY)
3	001-70107-00	2	HHCS, 3/8-16 X 1-1/4" 18-8 SS (FLOATING DOCKS ONLY)
4	001-70111-00	2	HHCS, 3/8-16 X 2" 18-8 SS (SECTIONAL DOCKS ONLY)
5	001-70112-00	2	HHCS, 3/8-16 X 2-1/4" 18-8 SS (SECTIONAL DOCKS ONLY)
6	001-71017-00	4	FLAT WASHER, 3/8" SAE SS 18-8
7	001-73821-00	2	BHCS, 3/8-16 X 2-1/2" SS 18-8
8	001-76071-00	4	NUT, NYLOCK 3/8-16 ALUM.
9	002-02532-00	1	ANGLE, DOCK CLEAT - 4"
10	510-34300-00	1	DOCK CLEAT, 10" CAST ALUM.

# FLOATING DOCK INSTALLATION INSTRUCTIONS

## STEP 1

INSERT (2) 3/8" NYLOCK NUTS AND (2) FLAT WASHERS INTO EACH OF THE NUT TRACKS THROUGH THE HOLES PROVIDED AND ADJUST TO THE DESIRED POSITION (FIGURE 1).

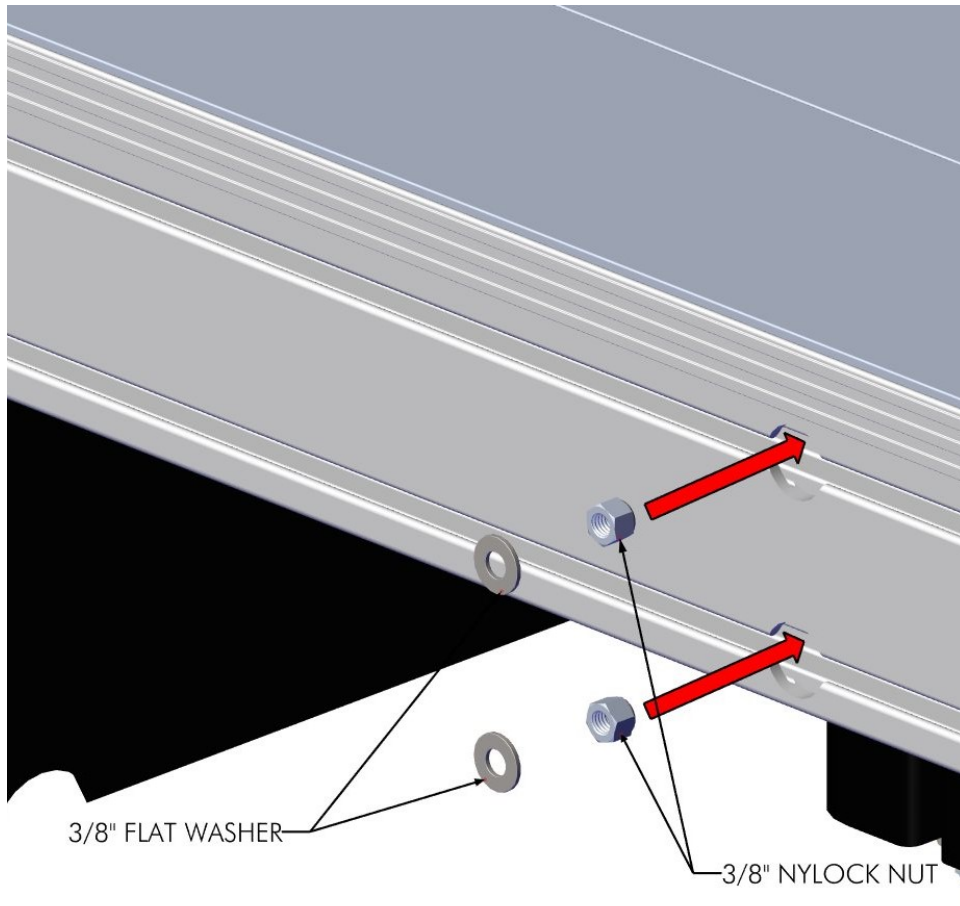


FIG. 1

## STEP 2

INSERT (2) 3/8" X 1-1/4" BOLTS IN THE TOP HOLES AND (2) 3/8" X 1" BOLTS IN THE BOTTOM HOLES OF THE ANGLE BRACKET, ALIGN THE BOLTS WITH THE CORRESPONDING NYLOCK NUTS AND FLAT WASHERS PREVIOUSLY INSTALLED. ADJUST TO THE DESIRED LOCATION. TORQUE TO 40 FT-LBS (FIGURE 2)

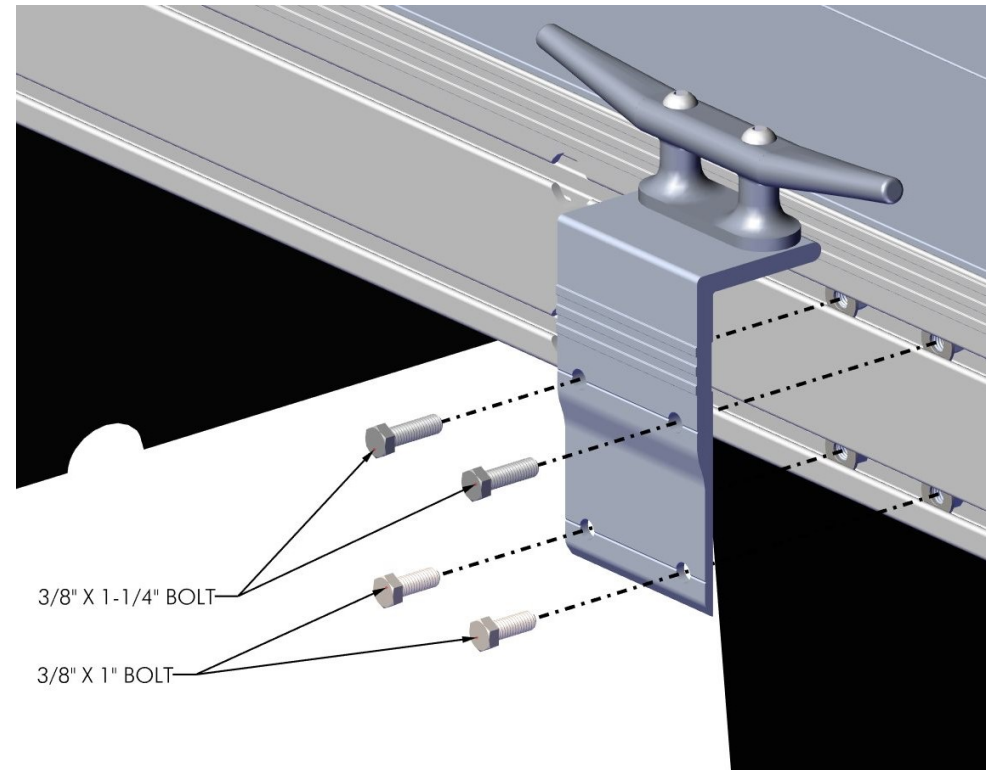


FIG. 2

# SECTIONAL DOCK INSTALLATION INSTRUCTIONS

## STEP 1

DETERMINE THE PLACEMENT OF THE CLEAT. USING A FRAMING SQUARE, MARK A VERTICAL LINE ACROSS THE TOP AND BOTTOM SERRATION AT THE DESIRED LOCATION OF THE LEFT TWO BOLT HOLES (THESE SERRATIONS ARE 3" APART AND ARE INTENDED TO ACT AS A HOLE SPACING REFERENCE).

MARK A SECOND LINE 2-3/4" FROM THE FIRST. USE A HAMMER AND PUNCH TO MAKE A DIMPLE FOR THE DRILL BIT AT THE INTERSECTIONS OF THE TOP AND BOTTOM SERRATIONS AND THE VERTICAL LINES (SEE FIGURE 3). THIS HELPS TO PREVENT THE DRILL FROM WANDERING WHILE DRILLING. DRILL (4) 13/32" HOLES. KEEP THE DRILL BIT PERPENDICULAR TO THE DOCK FRAME WHILE DRILLING.

## STEP 2

INSERT (2) 3/8" X 2-1/4" BOLTS IN THE TOP HOLES AND (2) 3/8" X 2" BOLTS IN THE BOTTOM HOLES OF THE ANGLE BRACKET AND INSERT THROUGH THE SIDE OF THE DOCK. PLACE (4) FLAT WASHERS OVER THE BOLTS AND THREAD ON (4) NYLOCK NUTS. TORQUE TO 40 FT-LBS. SEE FIG 4.

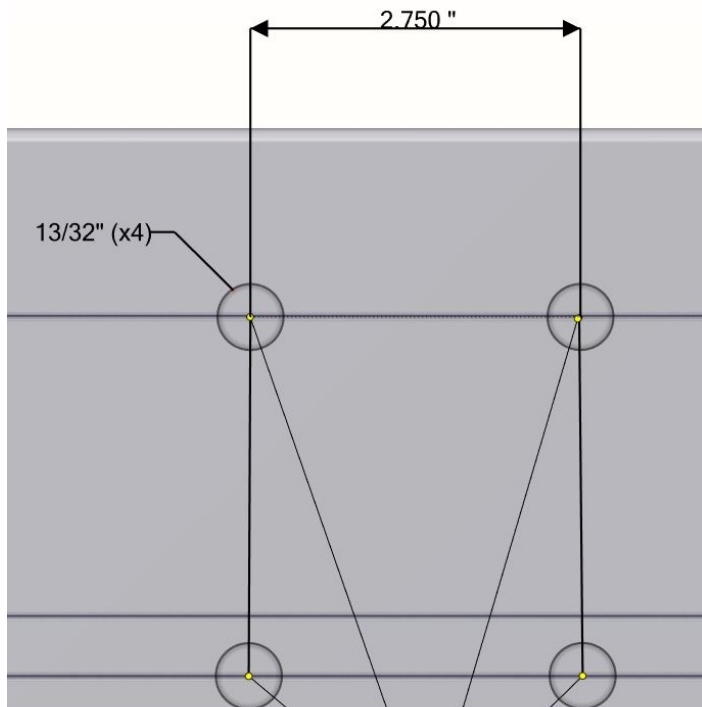


FIG. 3

