

FLOE BOAT LIFT WHEEL KIT (WELDED)

6-8000 & 10000 VSD

ASSEMBLY INSTRUCTIONS

KIT P/N 511-05250-00

511-05275-00



TOOLS REQUIRED

- (2) 9/16" SOCKET/WRENCH
- .3/4" SOCKET
- TORQUE WRENCH
- TAPE MEASURE

FLOE BOAT LIFT WHEEL KIT (WELDED) 6-8000 VSD

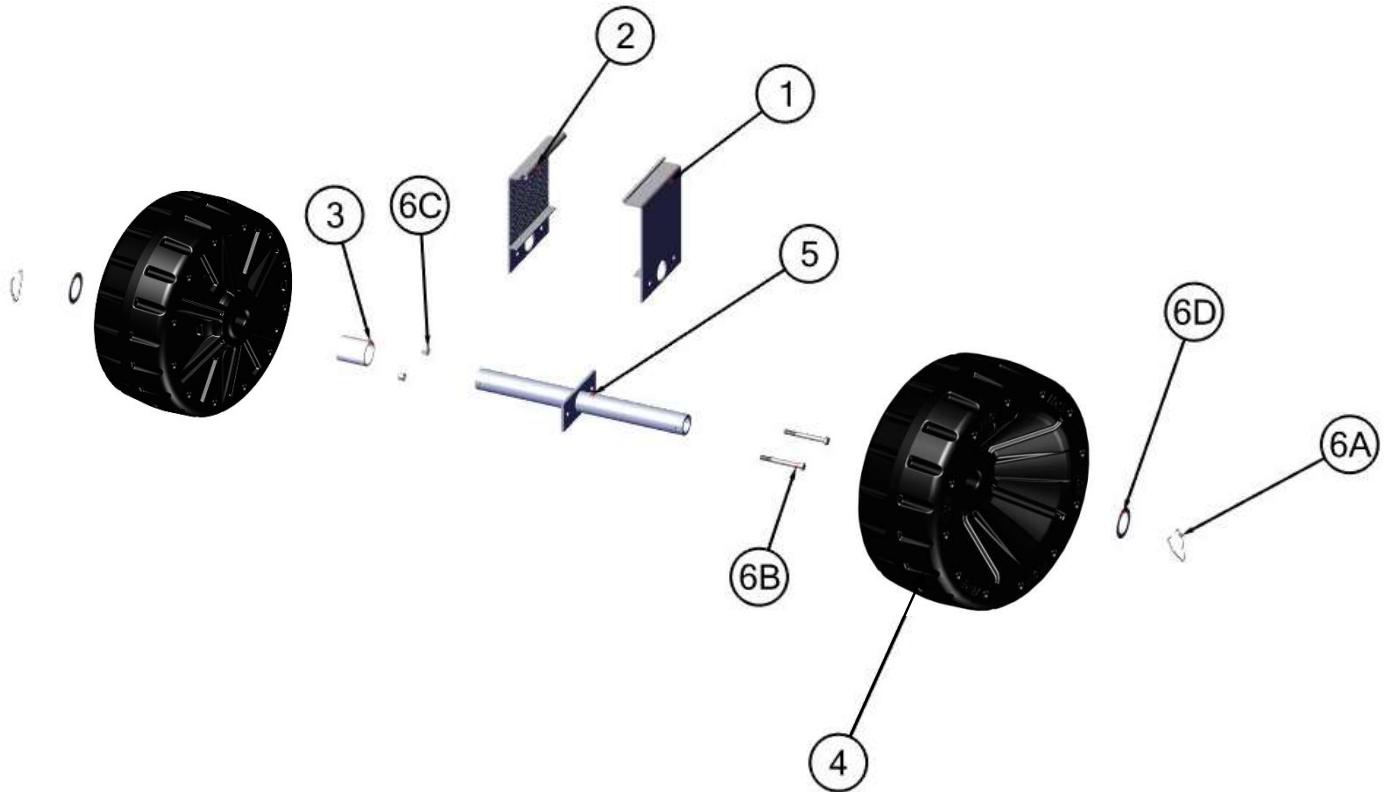
EXPLODED VIEW AND BOM

P/N 511-05250-00

ITEM	QTY	PART NUMBER	DESCRIPTION
1	2	002-04280-00	CLAMP, BL/WK 7-1/4" (M)
2	2	002-04281-00	CLAMP, BL/WK 7-1/4" (F)
3	2	007-00016-00	SPACER, POLYETHYLENE – 1.813"
4	4	010-06002-00	PLASTIC REPLCMT TIRE – AIRTIGHT
5	2	111-00454-00	WELD'T, BLWK SPINDLE 6-10K
6	1	511-04234-00	FASTENERS, LIFT WHEEL KIT (LG)

FASTENER KIT

ITEM	QTY	PART NUMBER	DESCRIPTION
A	4	001-26728-00	CLIP, STAINLESS STEEL-SPINDLE
B	4	001-70117-00	HHCS, 3/8-16 X 3 1/2" 18-8 SS
C	4	001-76071-00	NUT, NYLOCK 3/8-16 ALUM.
D	4	010-00020-00	WASHER, 2.5" O.D. x 1.75" I.D.



FLOE BOAT LIFT WHEEL KIT (WELDED) 10000 VSD

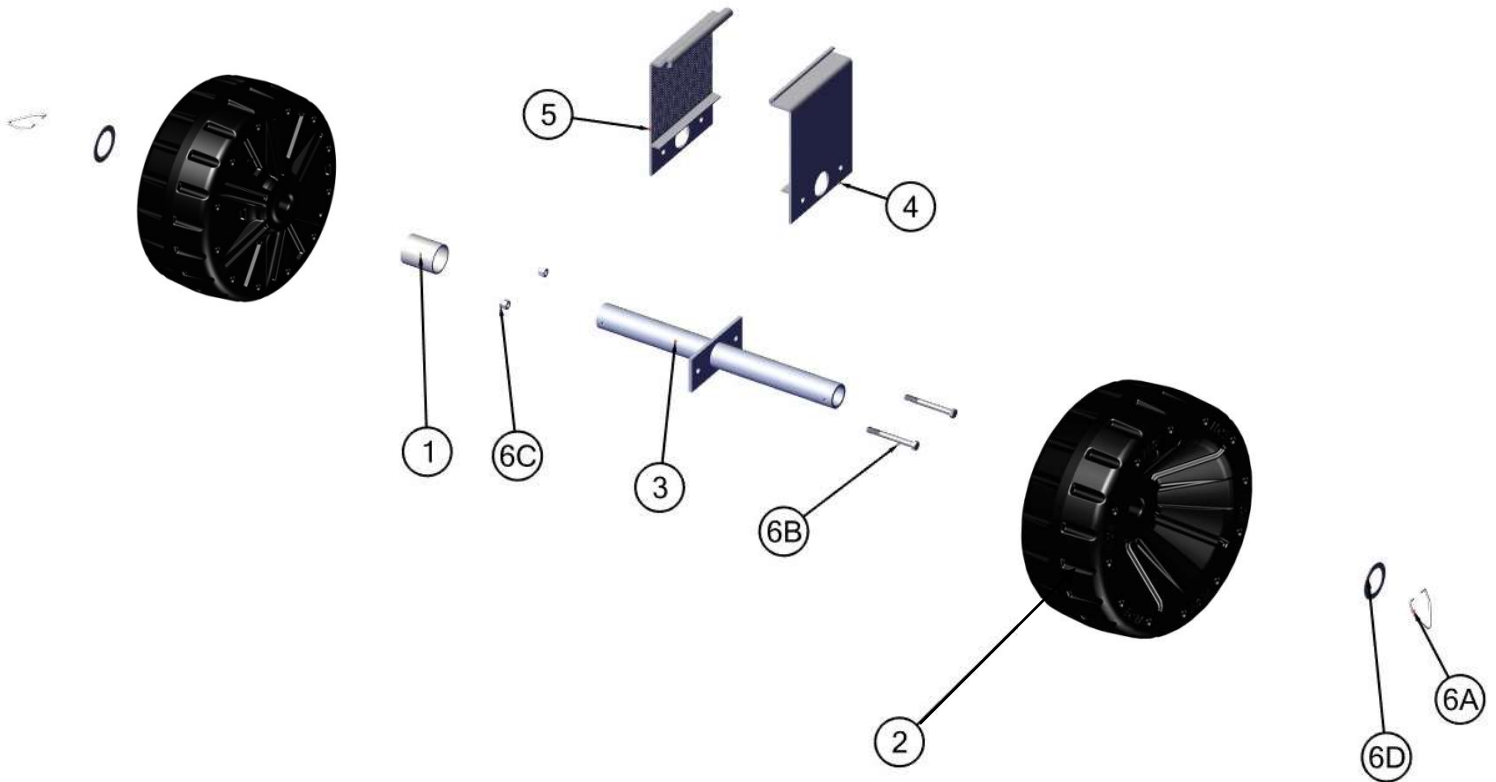
EXPLODED VIEW AND BOM

P/N 511-05275-00

ITEM	QTY	PART NUMBER	DESCRIPTION
1	2	007-00016-00	SPACER, POLYETHYLENE - 1.813"
2	4	010-06002-00	PLASTIC REPLCMT TIRE – AIRTIGHT
3	2	111-00454-00	WELD'T, BLWK SPINDLE 6-10K
4	2	111-00455-00	WELD'T, CLAMP BLWK 10K (M)
5	2	111-00456-00	WELD'T, CLAMP BLWK 10K (F)
6	1	511-04234-00	FASTENERS, LIFT WHEEL KIT (LG)

FASTENER KIT

ITEM	QTY	PART NUMBER	DESCRIPTION
A	4	001-26728-00	CLIP, STAINLESS STEEL-SPINDLE
B	4	001-70117-00	HHCS, 3/8-16 X 3 1/2" 18-8 SS
C	4	001-76071-00	NUT, NYLOCK 3/8-16 ALUM.
D	4	010-00020-00	WASHER, 2.5" O.D. x 1.75" I.D.



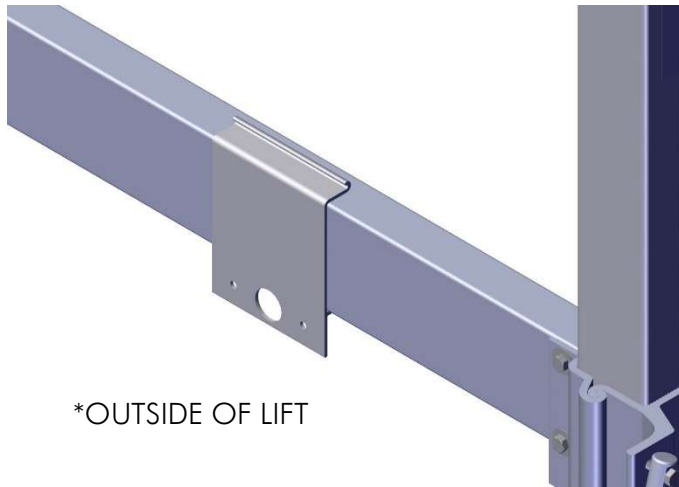
ASSEMBLY

VSD6-8000 & VSD10000

STEP 1

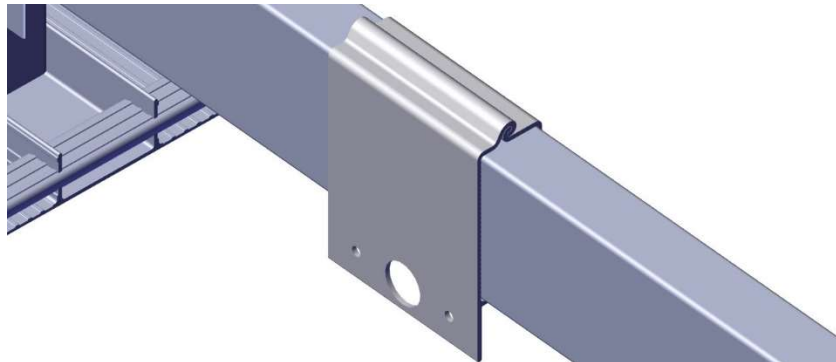
- BRACKET AND SPINDLE PLACEMENT

PLACE MALE CLAMP (6-8000 VSD: 002-04280-00, 10000 VSD: 111-00455-00) ON FRAME.

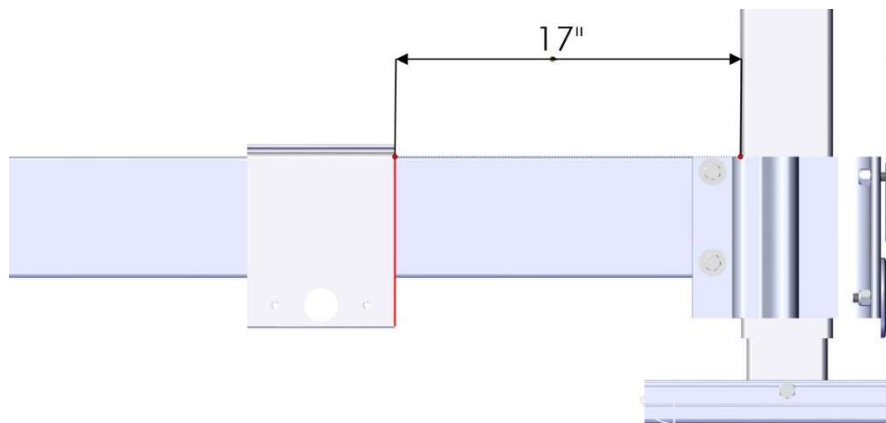


*OUTSIDE OF LIFT

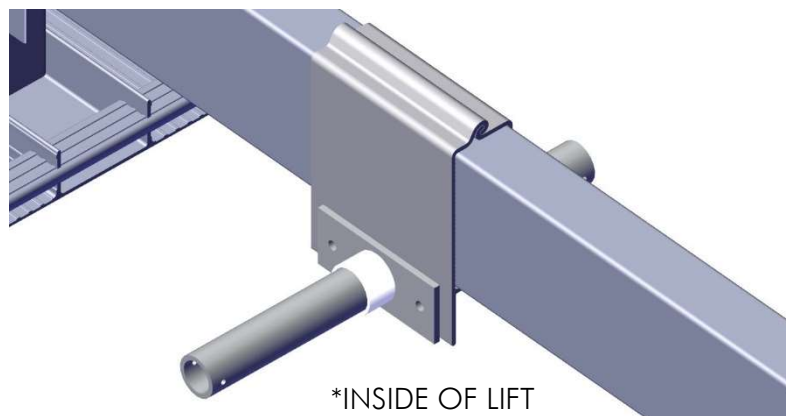
PLACE FEMALE CLAMP (6-8000 VSD: 002-04281-00, 10000 VSD: 111-00456-00) OVER MALE CLAMP.



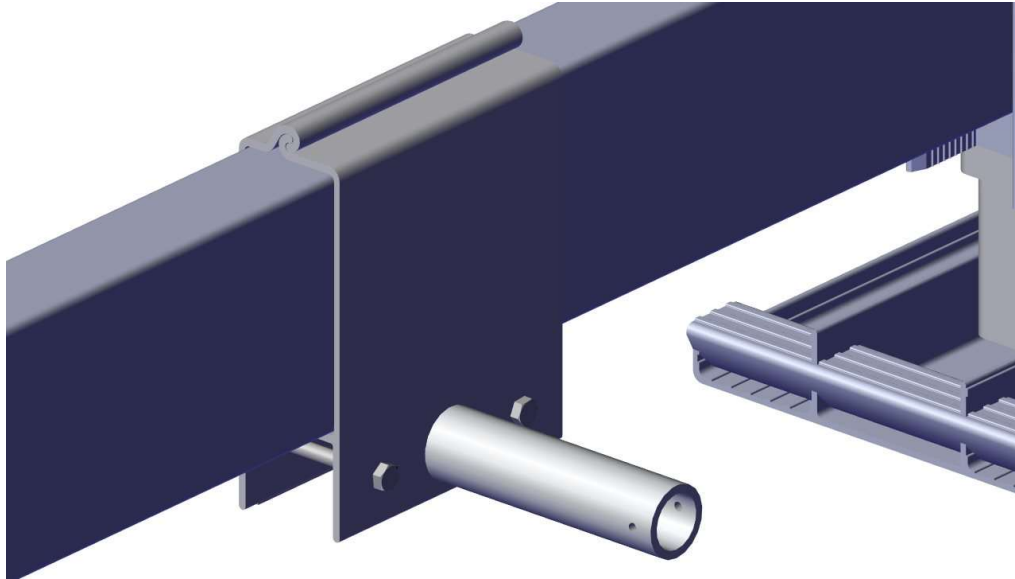
POSITION CLAMPS 17 INCHES FROM CORNER POST.



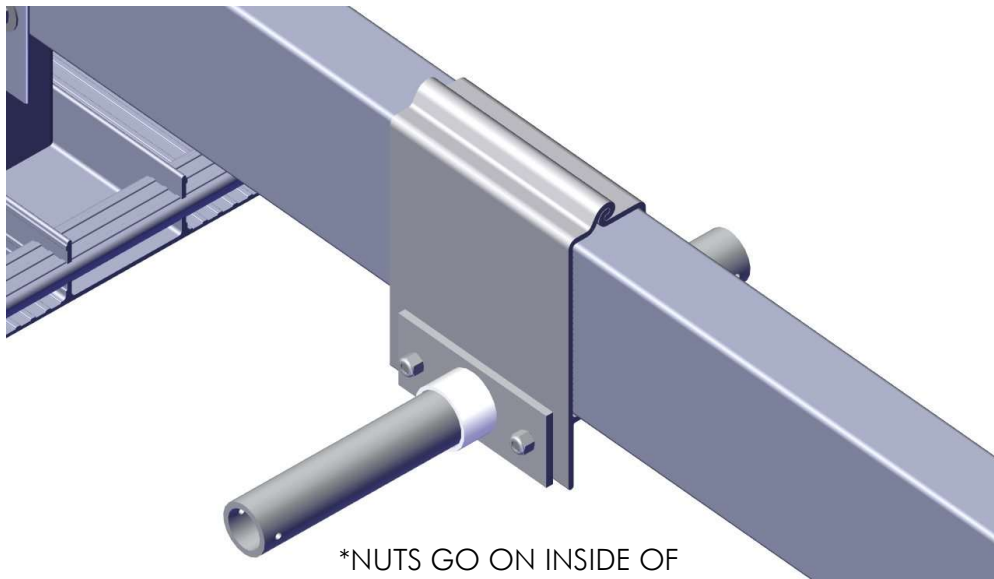
SLIDE SPINDLE ASSEMBLY INTO FEMALE CLAMP ON INTERIOR OF LIFT AS SHOWN. PLACE A SPACER ON THE INSIDE SPINDLE.



PLACE 3/8-16 x 3 1/2" BOLTS IN THE MALE CLAMP.



PLACE 3/8-16 NUTS ON BOLTS. TORQUE TO 5 FT-LBS.

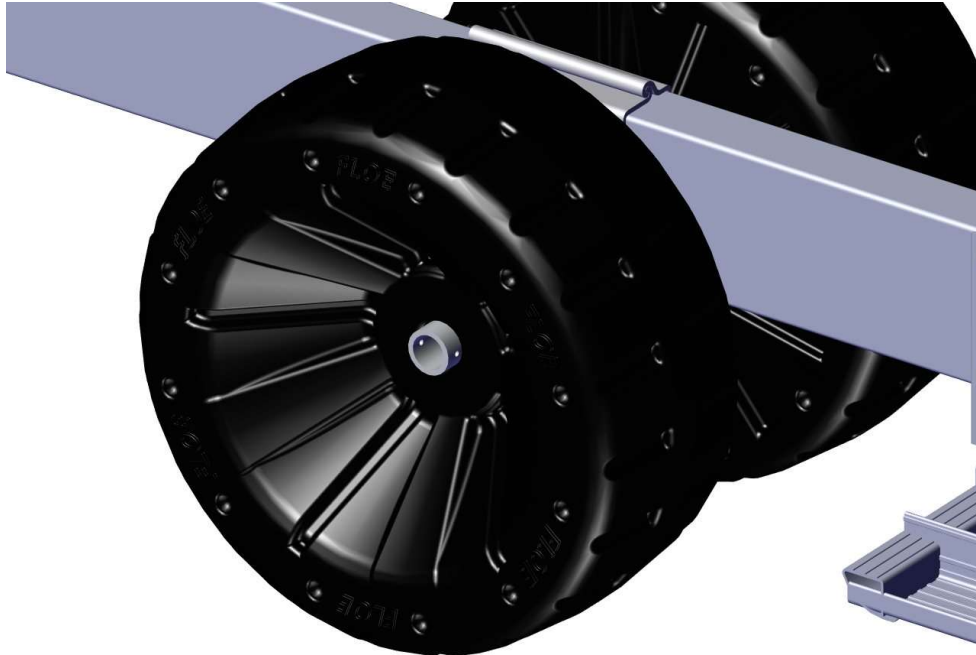


*NUTS GO ON INSIDE OF
LIFT/SPACER SIDE

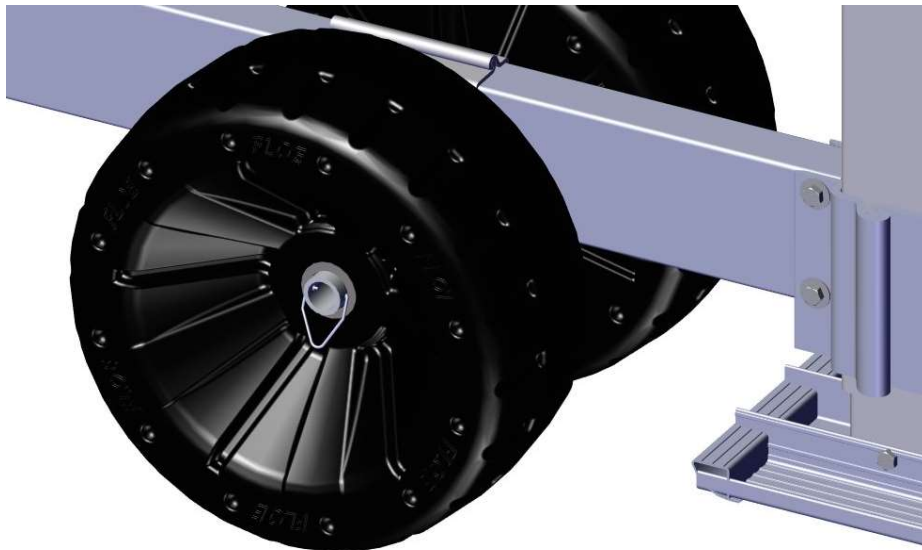
STEP 2

- WHEEL ATTACHMENT

PLACE A WHEEL (010-06002-00) ONTO SPINDLE.

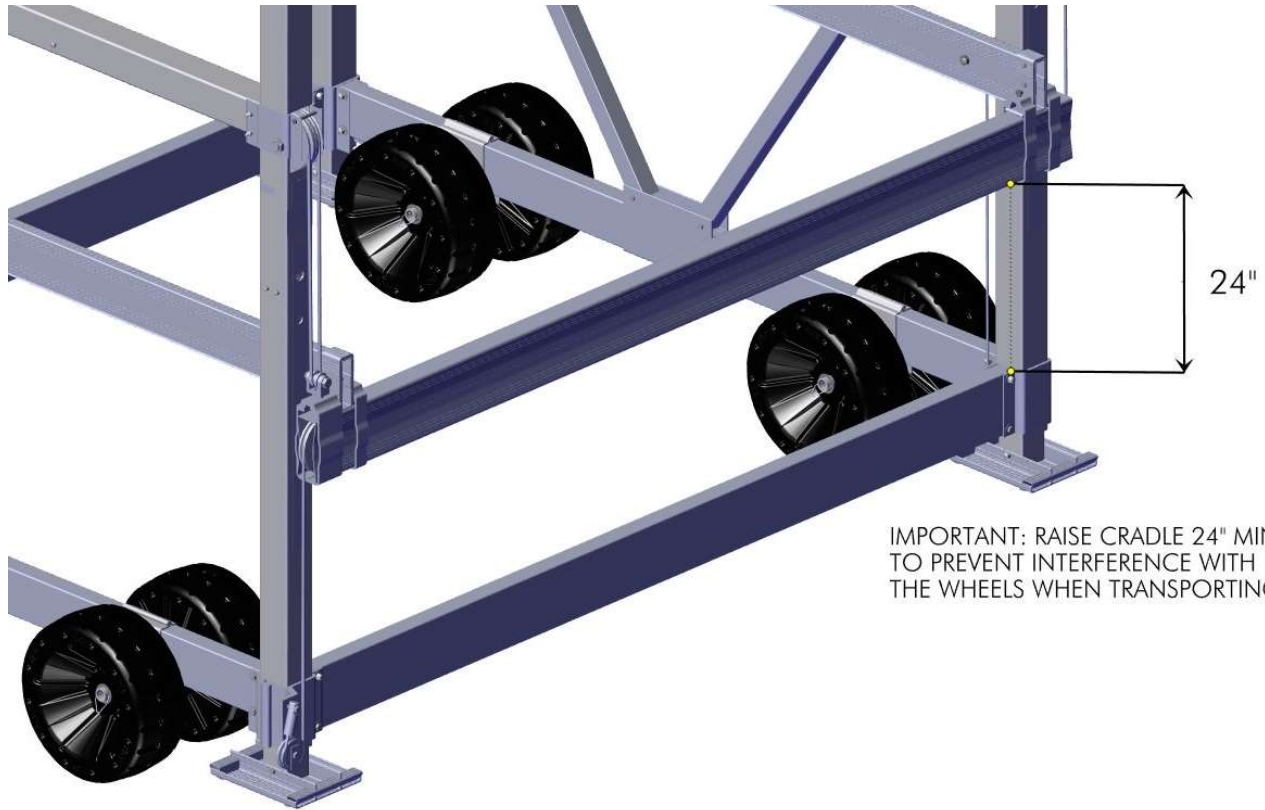


PLACE WASHER ONTO SPINDLE. PLACE SPINDLE CLIP INTO ONE OF THE DESIGNATED HOLES AND SLIDE OVER UNTIL IT SNAPS INTO THE OTHER HOLE.



IMPORTANT

IT IS IMPORTANT THAT THE LIFT CRADLE IS RAISED AT LEAST 2 FEET WHEN TRANSPORTING THE LIFT IN OR OUT OF THE WATER. THIS WILL PREVENT WHEELS FROM HITTING THE SIDE CRADLE BEAMS, WHICH WOULD PREVENT THE WHEELS FROM TURNING FREELY.



IMPORTANT: RAISE CRADLE 24" MINIMUM TO PREVENT INTERFERENCE WITH THE WHEELS WHEN TRANSPORTING.