

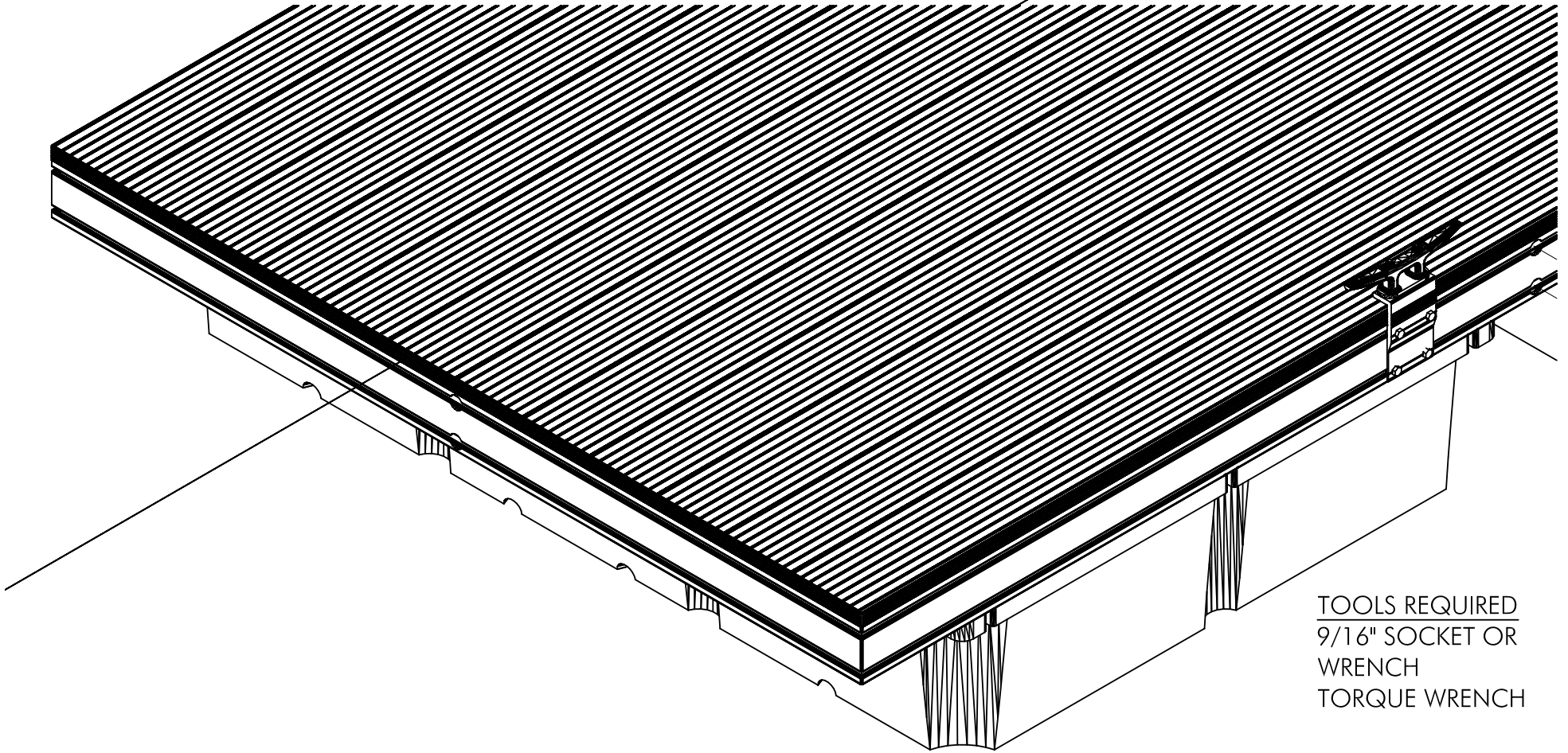
FLOE FLOATING DOCK CLEAT ASSEMBLY

ASSEMBLY INSTRUCTIONS

P/N 510-05360-00



FLOE

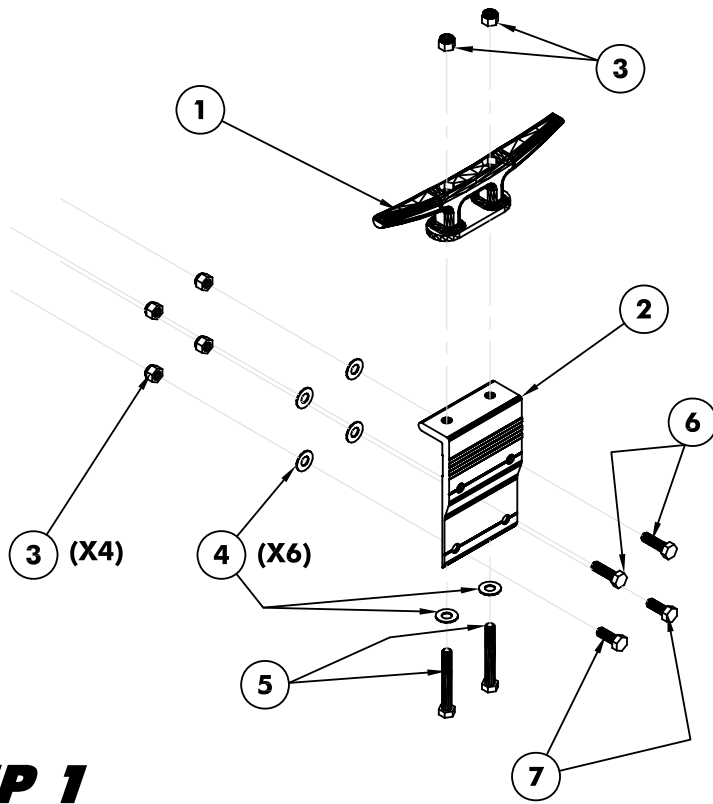


TOOLS REQUIRED
9/16" SOCKET OR
WRENCH
TORQUE WRENCH

CLEAT ASSEMBLY EXPLODED VIEW

P/N 511-05360-00

NO.	PART NO.	QTY.	DESCRIPTION
1	510-34300-00	1	DOCK CLEAT, CAST ALUMINUM
2	002-02532-00	1	ANGLE, DOCK CLEAT - 4"
3	001-76071-00	6	NUT, NYLOCK 3/8-16 ALUMINUM
4	001-71017-00	6	FLATWASHER, 3/8" SAE ss 18-8
5	001-70114-00	2	HHCS, 3/8-16 X 2 3/4" 18-8 ss
6	001-70107-00	2	HHCS, 3/8-16 X 1 1/4" 18-8 ss
7	001-70105-00	2	HHCS, 3/8-16 X 1" 18-8 ss



STEP 1

- Attach the Cleat to the 4" angle bracket using 3/8" x 2 3/4" bolts, flatwashers and nylock nuts. Torque to 25 ft/lbs. See Fig 1.

STEP 2

- Insert (2) 3/8" nylock nuts and (2) flatwashers into each of the nut tracks through the holes provided and adjust to the approximate desired position. See Fig 2.

STEP 3

- Insert (2) 3/8" x 1 1/4" bolts in the top holes and (2) 3/8" x 1" bolts in the bottom holes of the angle bracket, align the bolts with the corresponding nylock nuts and flatwashers previously installed. Adjust to the desired location. Torque to 40 ft/lbs. See Fig 3

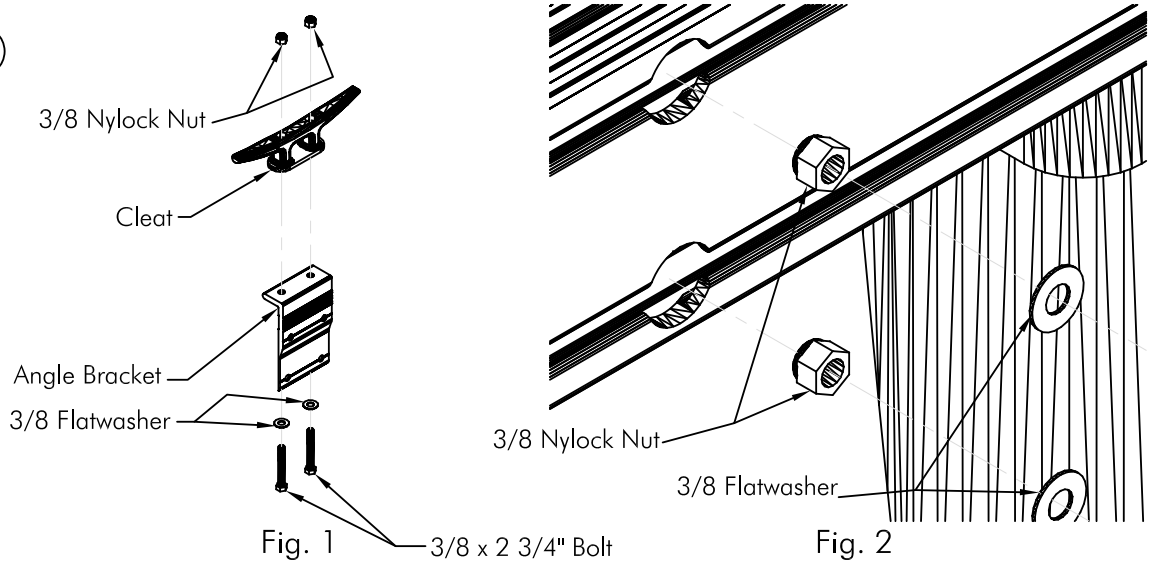


Fig. 1 3/8 x 2 3/4 Bolt

Fig. 2

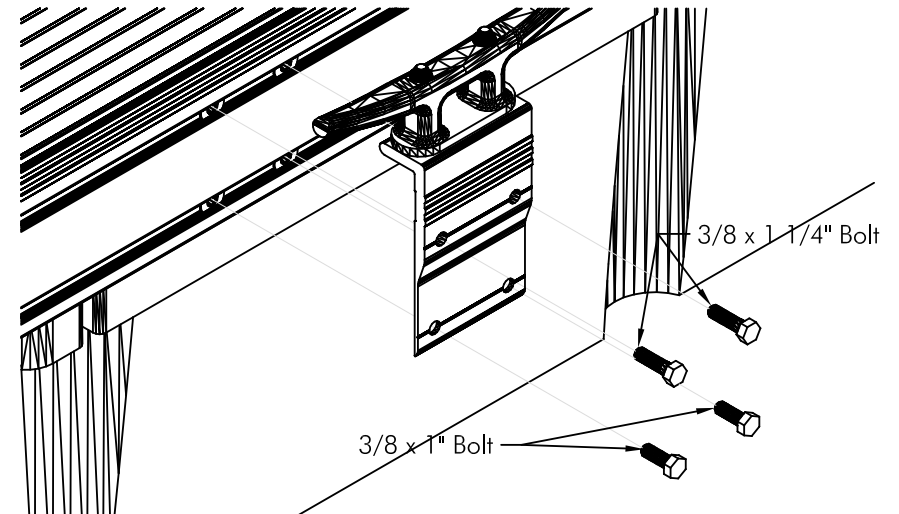


Fig. 3